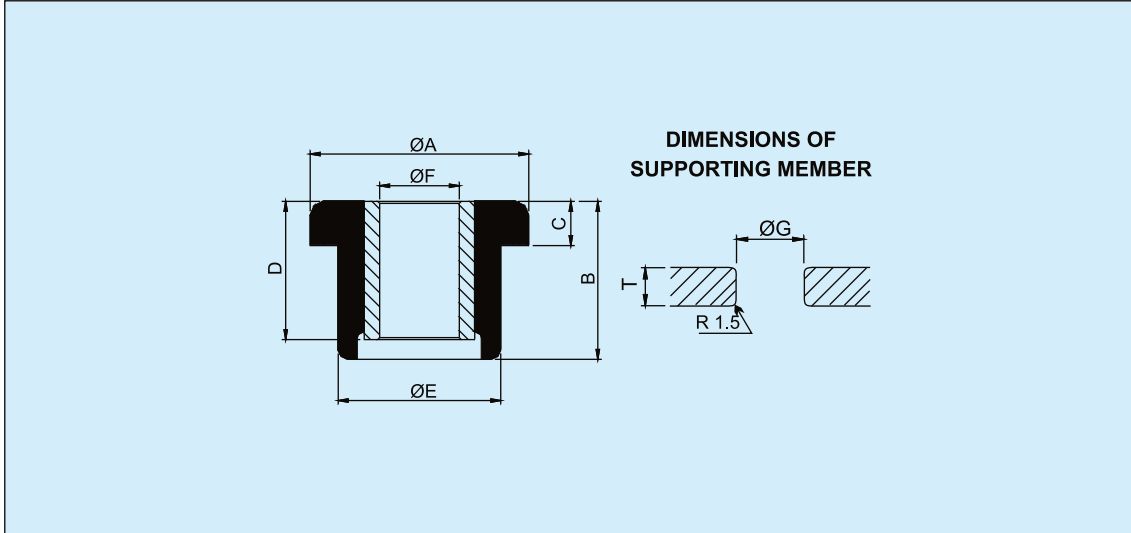


DC MOUNTS



Moulding Innovation into Global Bonds



POLYBOND DUAL COMPRESSION (DC) mounts can withstand high static and shock loading to help isolate vibration, control shock, and reduce noise. These mounts are to be used with the right supporting member and snubbing washers.

All DIMENSIONS IN mm.

PART NO.	ØA	B	C	D	ØE	ØF	ØG	T	MAX AXIAL LOAD (kg)	DEFL
PDC 1	44.4	31.7	10.3	25.4	31.7	13.0	28.4	97.0	112.0	1.1
PDC 2	50.8	50.8	19.0	36.8	34.9	13.5	31.8	16.0	112.0	1.7
PDC 3	63.5	50.8	15.8	42.9	41.2	16.4	38.1	19.1	227.0	1.7
PDC 4	76.2	57.1	20.6	50.8	50.8	16.3	46.0	23.6	340.0	2.1
PDC 5	50.0	31.5	13.2	25.5	34.2	13.6	31.0	9.5	260.0	2.0